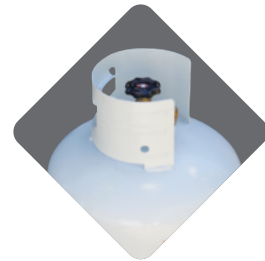




Regulation of **LP Gas** transport

Do you transport LP Gas?



Cylinders in a load quantity
of less than 250 litres for
personal purposes?

Yes →

Personal or home use

Ensure secure restraint



Cylinders in a load quantity
of less than 250 litres for
work purposes?

Yes →

Prime contractor

DG transport regulations apply



Cylinders in a load quantity of
more than 250 litres?

Yes →

Placard level

DG transport regulations apply; class
labels required on vehicle; emergency
responder approved



Road tanker vehicles

Yes →

Placard and licence level

DG transport regulations apply; DG driver
and DG vehicle licences required; emergency
information panels (EIP) and class labels on
vehicle; emergency responder approved

