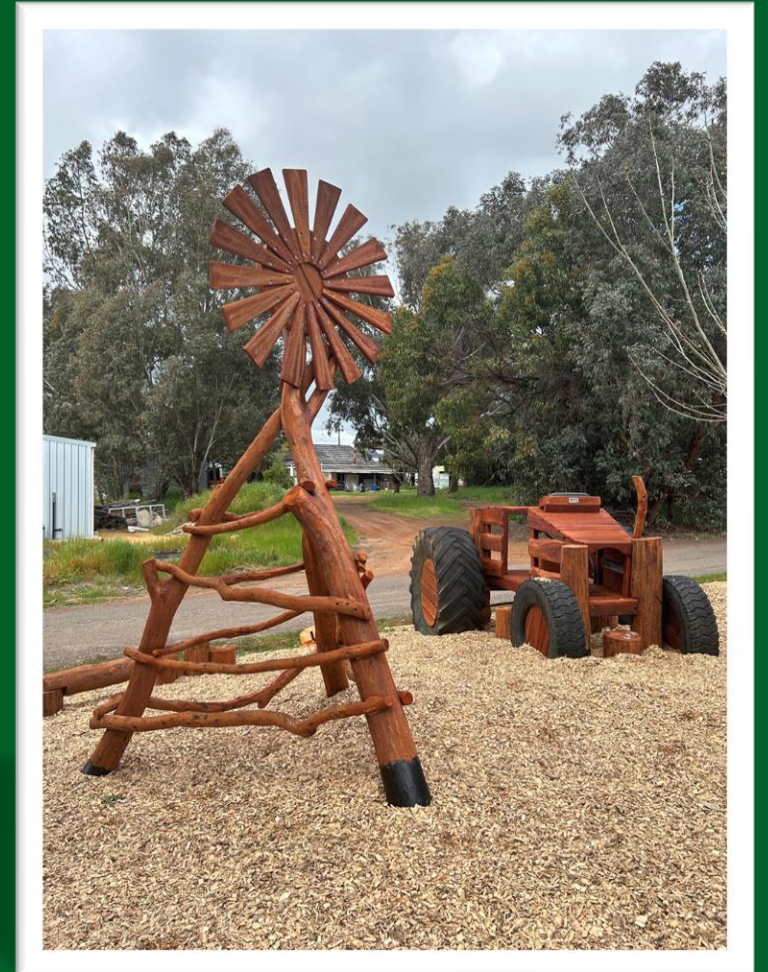




Child Accident Prevention Foundation of Australia
Western Australia

Growing Our Kids - Keeping Kids Safe on Farms

Tracy Blaszkow



Who are Kidsafe WA?

Kidsafe WA is the leading not for profit organisation dedicated to promoting safety and preventing childhood injuries and accidents in Western Australia.



Why does Kidsafe WA exist?

Over **24** Western Australian children die each year from preventable injuries, while a further **8,000** are hospitalised.



More children die of **injury** than die of cancer, asthma and infectious diseases combined.

Why are Kidsafe WA here today?

To increase the capacity of rural families to build a sustainable future for their **family**, **farm business**, and **the agricultural industry**.

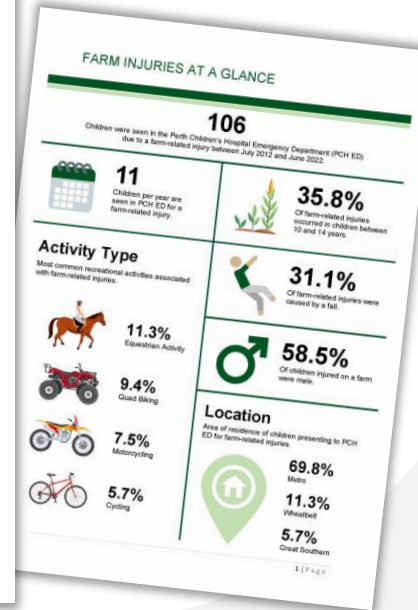
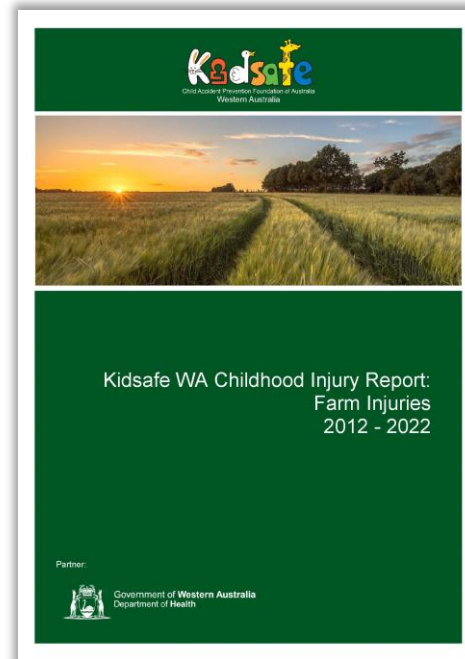
Kidsafe WA's work in farm safety aims to:

- Raise awareness of childhood injury statistics on WA farms.
- Prioritise children in farm safety actions.
- Encourage community collaboration to reduce the number of children injured on WA farms.

The state of child injury on farms

Kidsafe WA Childhood Injury Report: Farm Injuries 2012-2022

- Farm injury presentations to Perth Children's Hospital ED
Children aged 0-15
- Finding supported by literature review of child injury on farms across Australia.
- Limitations: Only provides a snapshot of serious farm-related injury in WA. Actual statistics are severely under-reported.



The state of child injury on farms

Kidsafe WA Childhood Injury Report: Literature Review

2020, Peachey, Lower & Rolfe, *Protecting the future: Fatal incidents on Australian farms involving children (2001-2019)*.

- ~12 children killed every year on farms.
- ~500 children hospitalised each year for a farm-related injury.
- ~30% of farm-related child fatalities are visitors to the farm.
- Top causes of fatality: Drowning, quad bikes, tractors, motorcycles, vehicles and horses.
- **No significant decrease in the rate of farm-related child fatalities in the past 20 years.**

The state of child injury on farms

Kidsafe WA Childhood Injury Report: PCH ED Data

106 presentations to PCH ED due to a farm-related injury between 2012-2022.

- 35% of injuries occurred in children between 10 and 14 years.
- 58% of children injured on a farm were male.
- Top causes of injury: Falls and transport accidents.
- Top activities associated with injury: Equestrian, quad bikes and motorbikes.



Benefits of raising kids on farms

- Endless outdoor play opportunities.
- Instils a passion, love and respect for the land.
- Learning opportunities: life/death cycle, farm processes.
- Encourages a good work ethic.
- Teaches responsibility.
- Unique lifestyle.
- Great pets.



Challenges for injury prevention

- Endless benefits to raising kids on farms – cannot simply remove them.
- Children are inevitably exposed to more injury risks.
- Impractical and unfeasible to separate children from hazards.
- Overlap between the home environment and agricultural workplace.
- Easy for parents and children to become complacent.
- Limited injury data = limited funding for injury prevention initiatives.
- Rural access to emergency services and medical facilities.

Typical injury prevention approach

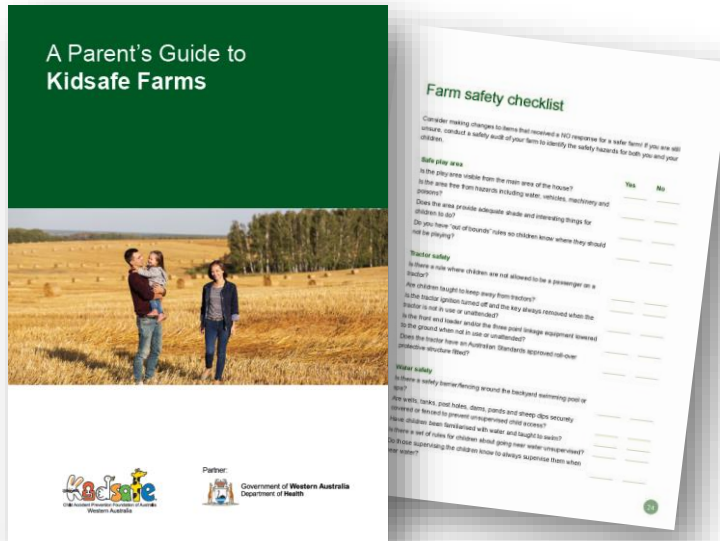
- 1 **Look** for the hazard – view the area from your child’s perspective.
- 2 **Decide** how to best protect your child from the hazard. This may include:
 - Removing the hazard
 - Guarding against the hazard
 - Supervising children closely around the hazard
- 3 **Make the changes:** Injuries often happen when we least expect it, it’s important to act immediately.

Where to from here?

- Consider all children present on your farms and what measures you are taking to protect them from hazards.
- Talk to your partner and children about injury risks on your farm.
- Risk assess situations that your child is involved in on the farm.
- Use evidence to guide your risk assessment.
- Encourage kids to set their own rules and consequences.
- Lead by example – children mimic our behaviour.
- Make safety conversations a regular occurrence.
- Utilise information & services available.
- Regularly update emergency response plan and CPR skills.

Kidsafe WA's farm safety resources

- A Parent's Guide to Kidsafe Farms
 - Download PDF or order hard copies
- Farm Safety Animation
 - Available to share from YouTube & Facebook



Kidsafe WA's farm safety resources

- Safety Island Farm Safety module: Interactive e-learning tool for primary school students.
 - Available at www.kidsafewa.com.au/safety-island



Let's see how we can stay safe around machinery and vehicles on the farm.



Play at home



Stay away from machinery



Watch out for cars



Buckle up

Kidsafe WA's farm safety resources

- Wheatbelt community workshops and school incursions
 - Supported by the Department of Health WA.
 - www.kidsafewa.com.au/regional-visits



Kidsafe WA's farm safety resources

- 2023 Northam Child Injury Prevention Symposium: Growing Up Safely on Farms



Other farm safety resources

- Safe Farms WA
- Farmsafe Australia
- Royal Life Saving Society WA – Keep Watch Program
- Injury Matters – Farm Safety Toolkit
- WHS Systems – ProcessWorx, Safe Ag Systems
- Dept. Energy, Mines, Industry Regulation and Safety
 - WorkSafe & Consumer Protection
- Do your own research

Kidsafe WA's farm safety future

Future goals:

- To bring together regional communities to continue this conversation.
- To contribute to current farm safety networks.
- To establish a child safety on farms working group.
- To adapt to the needs of farming families in WA.
- Seek additional support for our regional workshops and incursions.
- **To ensure all children have the opportunity to become healthy adults.**

Kidsafe WA Farm Safety Animation





Connect with Kidsafe WA

Contact Tracy Blaszkow | **E:** Tracy@kidsafewa.com.au | **M:** 0428 875 503

Follow Kidsafe WA for the latest child injury prevention updates

